

Disaster Prevention
Information

Administration Zone



Population : 1,277 people

Emergency notification

Gukeng Township Emergency
Operation Center,(EOC)
TEL: 05-582-8919

Chief of Village YONG-JIE LIN (林永結)

TEL: 05-582-8909

Gukeng Police Office

TEL:05-582-1324

Gukeng Fire Department

TEL:05-582-1537

Disaster Prevention
Information Website

Soil and Water Conservation Bureau

<http://246.swcb.gov.tw/>

Water Resources Agency

<http://www.wra.gov.tw/>

Directorate General of Highways

<http://www.thb.gov.tw/>

Evacuation Principle

Debris: Take refuge at evacuation
shelter.

Evacuation Shelter

Shelter1: Shuidui
Elementary School

Accommodate: 200 people

Address: No. 95, Shuidui,
Gukeng Township

TEL : 05-582-1049



Legend

Administrative Boundary

Village Boundary

Labelling

Evacuation Route

Shelter for Earthquake

Facility

Indoor Evacuation Shelter

Debris Disaster Potential

Landslide Potential zone

Dip Slope

Rock Slide

Detritus Slide

Historical Debris Disaster

Disaster Prevention Information

Administration Zone



Population : 1,524people

Emergency notification

Gukeng Township Emergency Operation Center,(EOC)
TEL: 05-582-8919
Chief of Village LIAN SONG ZHENG (鄭連松)
TEL: 05-526-5188
Gukeng Police Office
TEL:05-582-1324
Gukeng Fire Department
TEL:05-582-1537

Disaster Prevention Information Website

Soil and Water Conservation Bureau
<http://246.swcb.gov.tw/>
Water Resources Agency
<http://www.wra.gov.tw/>
Directorate General of Highways
<http://www.thb.gov.tw/>

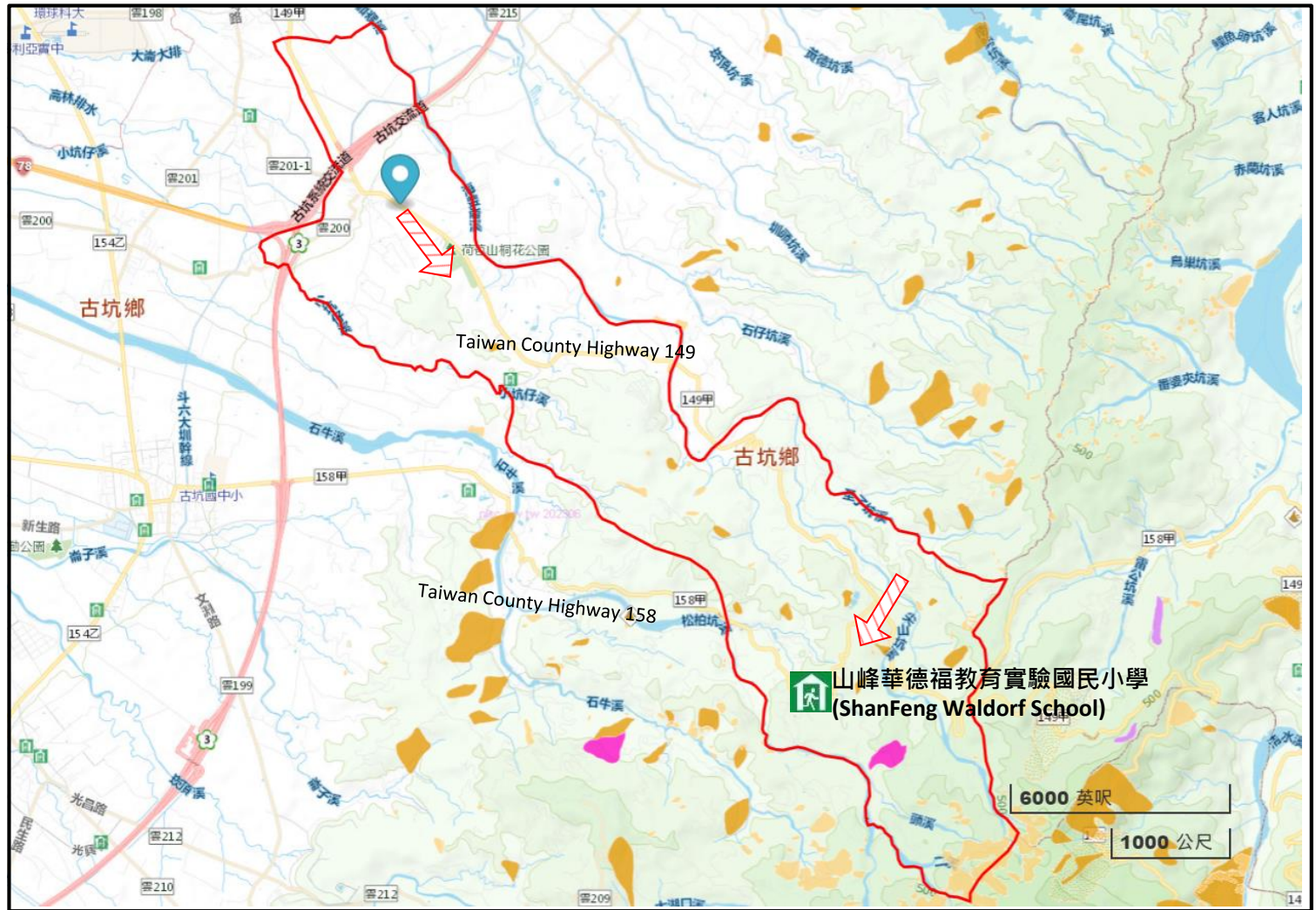
Evacuation Principle

Debris: Take refuge at evacuation shelter.

Evacuation Shelter

Shelter1: ShanFeng Waldorf School (坡)
Accommodate: 100 people
Address: No. 17, Shanfeng, Gukeng Township
TEL : 05-5822075

Made by Gukeng Township Office, March 2024



Legend	Administrative Boundary	Labelling	Facility	Debris Disaster Potential
	Village Boundary	Evacuation Route	Indoor Evacuation Shelter	Landslide Potential zone
		Shelter for Earthquake		Dip Slope
				Falling Rock
				Rock Slide
				Detritus Slide
				Historical Debris Disaster

Disaster Prevention Information

Administration Zone



Population : 3,595people

Emergency notification

Gukeng Township Emergency Operation Center,(EOC)
TEL: 05-582-8919
Chief of Village LIANG-ZHI ZHONG (鐘良智)
TEL: 05-526-1237
Gukeng Police Office
TEL:05-582-1324
Gukeng Fire Department
TEL:05-582-1537

Disaster Prevention Information Website

Soil and Water Conservation Bureau
<http://246.swcb.gov.tw/>
Water Resources Agency
<http://www.wra.gov.tw/>
Directorate General of Highways
<http://www.thb.gov.tw/>

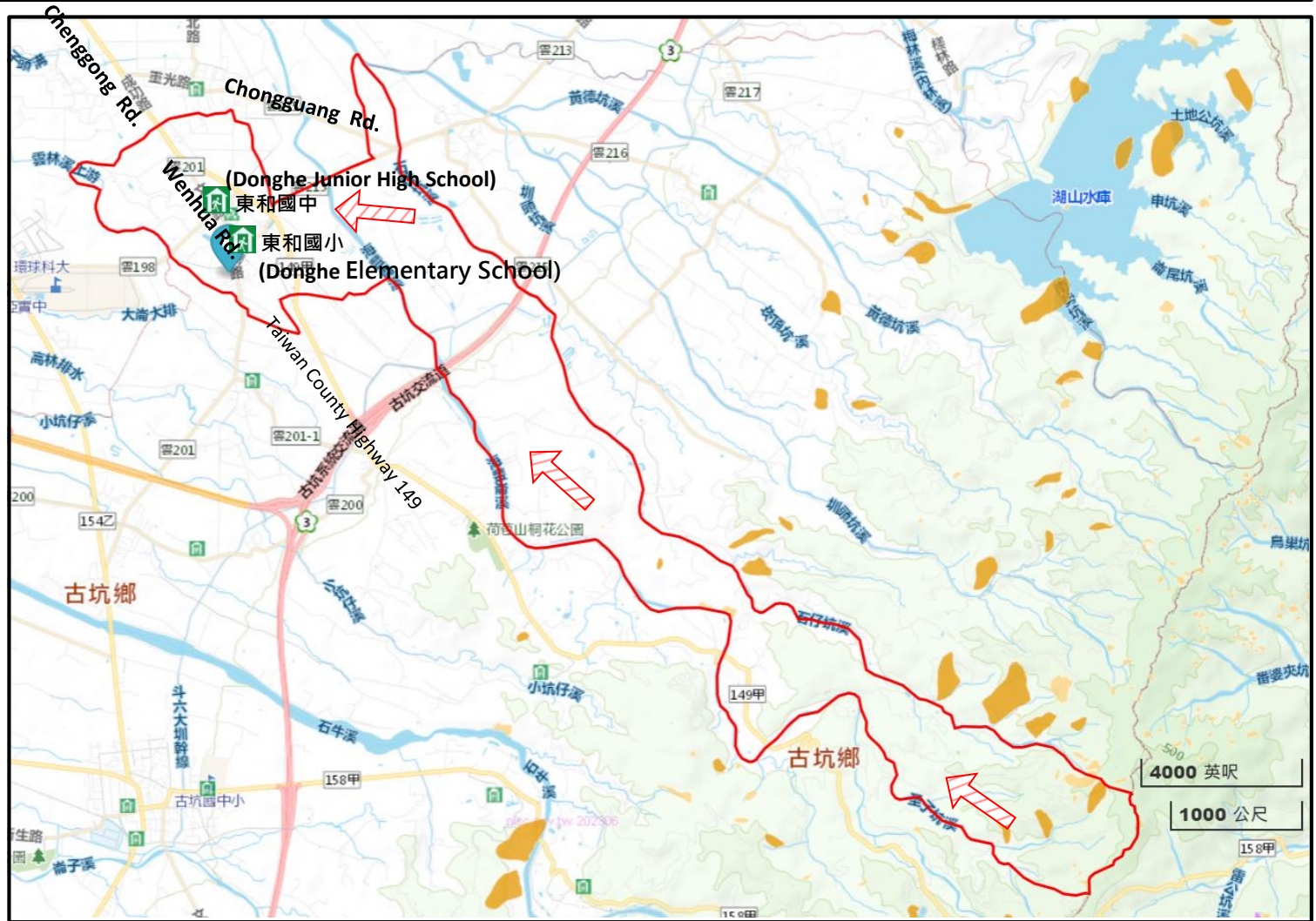
Evacuation Principle

Debris: Take refuge at evacuation shelter.

Evacuation Shelter

Shelter1: Donghe Elementary School
Accomodate: 100 people (坡)
Address: No. 120, Wenhua Rd., Gukeng Township
TEL: 05-526-3153
Shelter2: Donghe Junior High School (坡)
Accomodate: 200 people
Address: No. 130, Wenhua Rd., Gukeng Township
TEL : 05-526-5188

Made by Gukeng Township Office, March 2024



Legend	Administrative Boundary	Labelling	Facility	Debris Disaster Potential
	Village Boundary	Evacuation Route	Indoor Evacuation Shelter	Landslide Potential zone
		Shelter for Earthquake		Dip Slope
				Falling Rock
				Rock Slide
				Detritus Slide
				Historical Debris Disaster

Disaster Prevention Information

Administration Zone



Population : 1,550people

Emergency notification

Gukeng Township Emergency Operation Center,(EOC)
TEL: 05-582-8919

Chief of Village SHI RONG LAI (賴世榮)
TEL: 05-526-1345

Gukeng Police Office
TEL:05-582-1324

Gukeng Fire Department
TEL:05-582-1537

Disaster Prevention Information Website

Soil and Water Conservation Bureau

<http://246.swcb.gov.tw/>

Water Resources Agency

<http://www.wra.gov.tw/>

Directorate General of Highways

<http://www.thb.gov.tw/>

Evacuation Principle

Debris: Take refuge at evacuation shelter.

Evacuation Shelter

Shelter1: Xinguang Elementary School (坡)
Accomodate: 100 people
Address: No. 1-1, Xinzhuang, Gukeng Township
TEL: 05-526-3572



Legend	Administrative Boundary	Labelling	Facility	Debris Disaster Potential
	Village Boundary	Evacuation Route	Indoor Evacuation Shelter	Landslide Potential zone
		Shelter for Earthquake		Dip Slope
				Falling Rock
				Rock Slide
				Detritus Slide
				Historical Debris Disaster

Disaster Prevention Information

Administration Zone



Population : 2,169people

Emergency notification

Gukeng Township Emergency Operation Center,(EOC)
TEL: 05-582-8919
Chief of Village GUO SHENG WANG (王國勝)
TEL: 05-526-3928
Gukeng Police Office
TEL:05-582-1324
Gukeng Fire Department
TEL:05-582-1537

Disaster Prevention Information Website

Soil and Water Conservation Bureau
<http://246.swcb.gov.tw/>
Water Resources Agency
<http://www.wra.gov.tw/>
Directorate General of Highways
<http://www.thb.gov.tw/>

Evacuation Principle

Debris: Take refuge at evacuation shelter.

Evacuation Shelter

Shelter1: Qishan Elementary School (棋山國小) (坡)
Accommodate: 100 people
Address: No. 49, Sanhe, Gukeng Township
TEL: 05-526-3673



Legend	Administrative Boundary	Labelling	Facility	Debris Disaster Potential
	Village Boundary	Evacuation Route	Indoor Evacuation Shelter	Landslide Potential zone
		Shelter for Earthquake		Dip Slope
				Falling Rock
				Rock Slide
				Detritus Slide
				Historical Debris Disaster

Disaster Prevention Information

Administration Zone



Population : 709 people

Emergency notification

Gukeng Township Emergency Operation Center, (EOC)
TEL: 05-582-8919

Chief of Village GUO HE LI (李國和)
TEL: 05-590-1203

Gukeng Police Office
TEL: 05-582-1324

Gukeng Fire Department
TEL: 05-582-1537

Disaster Prevention Information Website

Soil and Water Conservation Bureau

<http://246.swcb.gov.tw/>

Water Resources Agency

<http://www.wra.gov.tw/>

Directorate General of Highways

<http://www.thb.gov.tw/>

Evacuation Principle

Debris: Take refuge at evacuation shelter.

Evacuation Shelter

Shelter1: Huashan **Hevuan** Family Homestay 坡

Accommodate: 70 people
Address: No. 77, Huashan, Gukeng Township

TEL: 05-590-1667

Shelter2: Xiangcun Homestay 坡

Accommodate: 20 people
Address: No. 81-9, Huashan, Gukeng Township

TEL : 05-590-1357

Made by Gukeng Township Office,
March 2024



Legend	Administrative Boundary	Labelling	Facility	Debris Disaster Potential
	Village Boundary	Evacuation Route	Indoor Evacuation Shelter	Landslide Potential zone
		Shelter for Earthquake		Dip Slope
				Falling Rock
				Rock Slide
				Detritus Slide
				Historical Debris Disaster

Disaster Prevention Information

Administration Zone



Population : 274people

Emergency notification

Gukeng Township Emergency Operation Center,(EOC)
TEL: 05-582-8919
Chief of Village MING XUAN MING XUAN (余明軒)
TEL: 05-590-1191
Gukeng Police Office
TEL:05-582-1324
Gukeng Fire Department
TEL:05-582-1537

Disaster Prevention Information Website

Soil and Water Conservation Bureau
<http://246.swcb.gov.tw/>
Water Resources Agency
<http://www.wra.gov.tw/>
Directorate General of Highways
<http://www.thb.gov.tw/>

Evacuation Principle

Debris: Take refuge at evacuation shelter.

Evacuation Shelter

Shelter1: Huanan Elementary School (坡)
Accommodate: 50 people
Address: No. 28, Huanan, Gukeng Township
TEL: 05-590-1529



Legend	Administrative Boundary	Labelling	Facility	Debris Disaster Potential
	Village Boundary	Evacuation Route	Indoor Evacuation Shelter	Landslide Potential zone
		Shelter for Earthquake		Dip Slope
				Falling Rock
				Rock Slide
				Detritus Slide
				Historical Debris Disaster

Disaster Prevention Information

Administration Zone



Population : 2,343people

Emergency notification

Gukeng Township Emergency Operation Center,(EOC)
TEL: 05-582-8919
Chief of Village MAO XING LAI (賴茂行)
TEL: 05-582-1604
Gukeng Police Office
TEL:05-582-1324
Gukeng Fire Department
TEL:05-582-1537

Disaster Prevention Information Website

Soil and Water Conservation Bureau

<http://246.swcb.gov.tw/>

Water Resources Agency

<http://www.wra.gov.tw/>

Directorate General of Highways

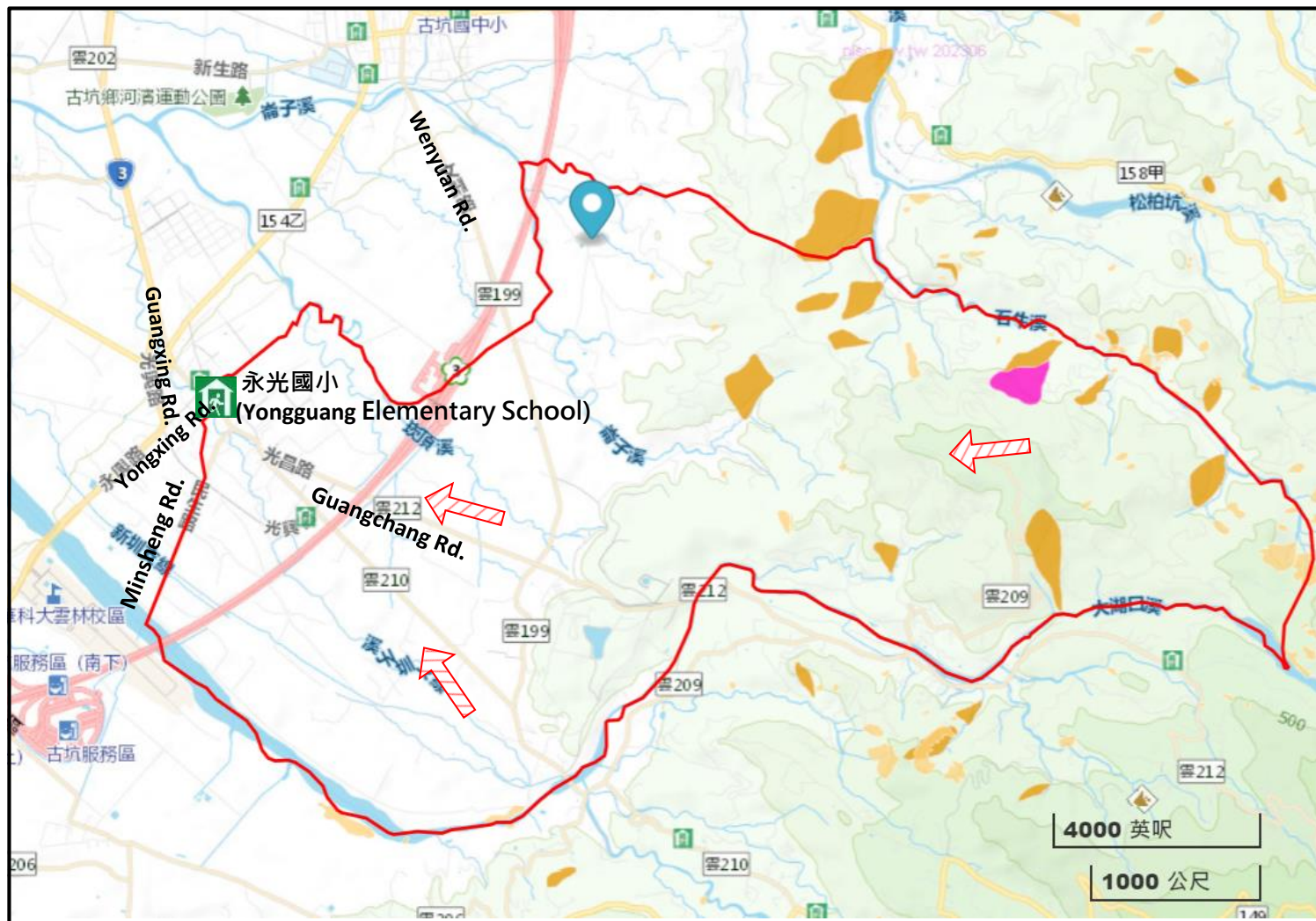
<http://www.thb.gov.tw/>

Evacuation Principle

Debris: Take refuge at evacuation shelter.

Evacuation Shelter

Shelter1: Yongguang Elementary (坡)
School
Accomodate: 100 people
Address: No. 84, Wenchang Rd.,
Gukeng Township
TEL: 05-582-1057



Legend	Administrative Boundary	Labelling	Facility	Debris Disaster Potential
	Village Boundary	Evacuation Route	Indoor Evacuation Shelter	Landslide Potential zone
		Shelter for Earthquake		Dip Slope
				Falling Rock
				Rock Slide
				Detritus Slide
				Historical Debris Disaster

Disaster Prevention Information

Administration Zone



Population : 1,090people

Emergency notification

Gukeng Township Emergency Operation Center,(EOC)
TEL: 05-582-8919
Chief of Village HUANG YI HUANG(黃煌儀)
TEL: 05-590-0338
Gukeng Police Office
TEL:05-582-1324
Gukeng Fire Department
TEL:05-582-1537

Disaster Prevention Information Website

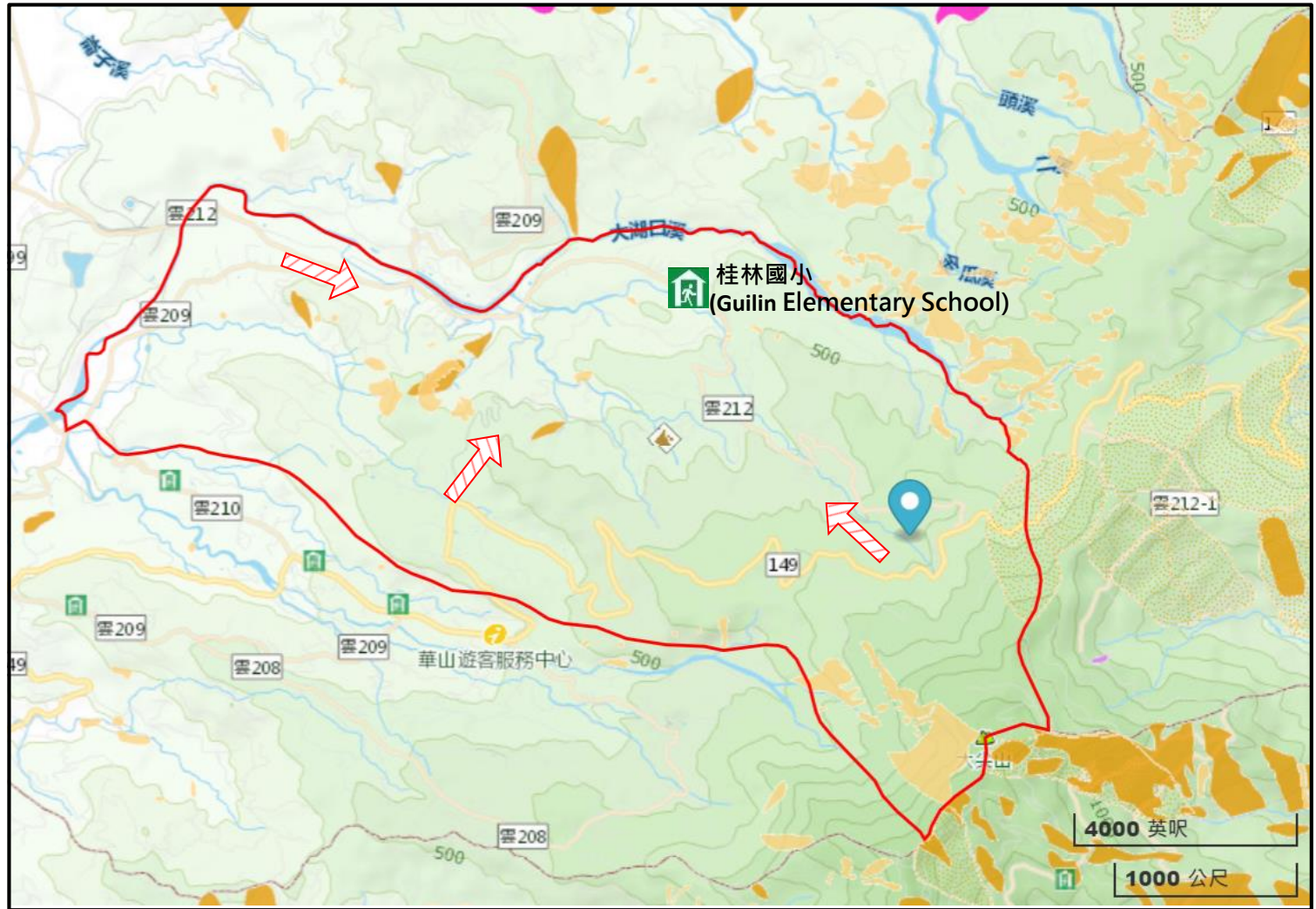
Soil and Water Conservation Bureau
<http://246.swcb.gov.tw/>
Water Resources Agency
<http://www.wra.gov.tw/>
Directorate General of Highways
<http://www.thb.gov.tw/>

Evacuation Principle

Debris: Take refuge at evacuation shelter.

Evacuation Shelter

Shelter1: Guilin Elementary School
Accommodate: 150 people
Address: No. 95, Guilin, Gukeng Township
TEL: 05-590-1048



Legend	Administrative Boundary	Labelling	Facility	Debris Disaster Potential
	Village Boundary	Evacuation Route	Indoor Evacuation Shelter	Landslide Potential zone
		Shelter for Earthquake		Dip Slope
				Falling Rock
				Rock Slide
				Detritus Slide
				Historical Debris Disaster

Disaster Prevention Information

Administration Zone



Population : 1,374people

Emergency notification

Gukeng Township Emergency Operation Center,(EOC)
TEL: 05-582-8919
Chief of Village CHAO-QIN TU (涂朝欽)
TEL: 05-582-1201
Gukeng Police Office
TEL:05-582-1324
Gukeng Fire Department
TEL:05-582-1537

Disaster Prevention Information Website

Soil and Water Conservation Bureau
<http://246.swcb.gov.tw/>
Water Resources Agency
<http://www.wra.gov.tw/>
Directorate General of Highways
<http://www.thb.gov.tw/>

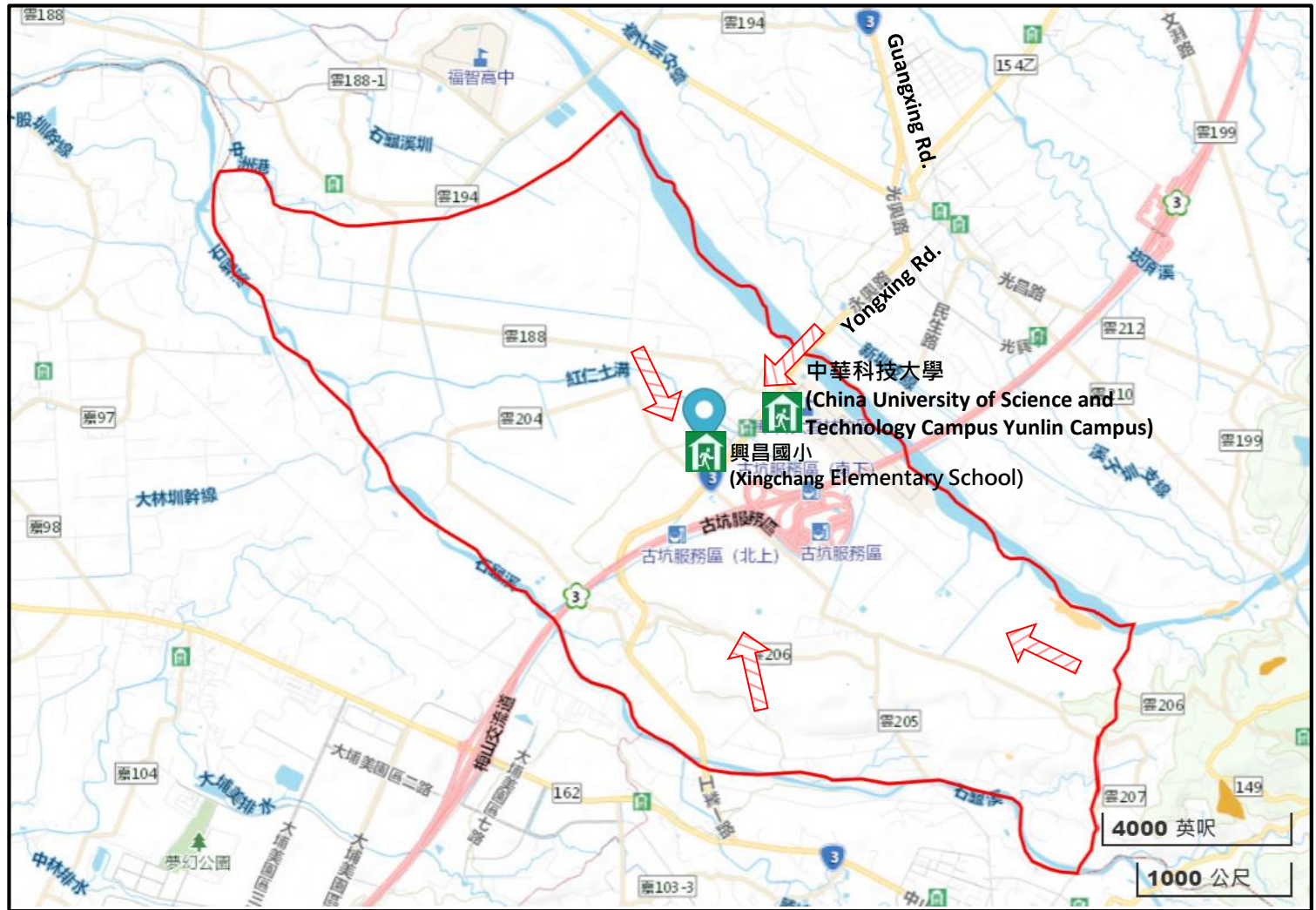
Evacuation Principle

Debris: Take refuge at evacuation shelter.

Evacuation Shelter

Shelter1: Xingchang Elementary School (坡)
Accommodate: 100 people
Address: No. 6-1, Nanchang, Gukeng Township
TEL: 05-582-1060
Shelter2: China University of Science and Technology Campus Yunlin Campus (坡)
Accommodate: 44 people
Address: No. 6-26, Nanchang, Gukeng Township
TEL : 05-770-9666

Made by Gukeng Township Office, March 2024



Legend	Administrative Boundary	Labelling	Facility	Debris Disaster Potential
	Village Boundary	Evacuation Route	Indoor Evacuation Shelter	Landslide Potential zone
		Shelter for Earthquake		Dip Slope
				Falling Rock
				Rock Slide
				Detritus Slide
				Historical Debris Disaster

Disaster Prevention Information

Administration Zone



Population : 447people

Emergency notification

Gukeng Township Emergency Operation Center, (EOC)
TEL: 05-582-8919
Chief of Village YONG-SHU LIAO (廖永樹)
TEL: 05-581-1236
Gukeng Police Office
TEL: 05-582-1324
Gukeng Fire Department
TEL: 05-582-1537
Caoling Fire Department
TEL: 05-583-1507

Disaster Prevention Information Website

Soil and Water Conservation Bureau
<http://246.swcb.gov.tw/>
Water Resources Agency
<http://www.wra.gov.tw/>
Directorate General of Highways
<http://www.thb.gov.tw/>

Evacuation Principle

Debris: Take refuge at evacuation shelter.

Evacuation Shelter

Shelter1: **Shitou Park Homestay** (坡)
Accomodate: 130 people
Address: No. 1-286, Chaoyang Rd., Gukeng Township
TEL: 05-582-9829
Shelter2: **Zhanghu Junior and Elementary School of Ecology** (坡)
Accomodate: 50 people
Address: No. 50-2, Shiqiao, Gukeng Township
TEL : 05-590-1529

Made by **Gukeng Township Office**,
March2024



Legend	Administrative Boundary	Labelling	Facility	Debris Disaster Potential
	Village Boundary	Evacuation Route	Indoor Evacuation Shelter	Landslide Potential zone
		Shelter for Earthquake		Dip Slope
				Rock Slide
				Falling Rock
				Detritus Slide
				Historical Debris Disaster

Disaster Prevention
Information

Administration Zone



Population : 554people

Emergency notification

Gukeng Township Emergency
Operation Center, (EOC)
TEL: 05-582-8919Chief of Village BING-TONG CHEN(陳兵通)
TEL: 05-583-1269Gukeng Police Office
TEL: 05-582-1324Gukeng Fire Department
TEL: 05-582-1537Caoling Fire Department
TEL: 05-583-1507Disaster Prevention
Information Website

Soil and Water Conservation Bureau

<http://246.swcb.gov.tw/>

Water Resources Agency

<http://www.wra.gov.tw/>

Directorate General of Highways

<http://www.thb.gov.tw/>

Evacuation Principle

Debris: Take refuge at evacuation
shelter.

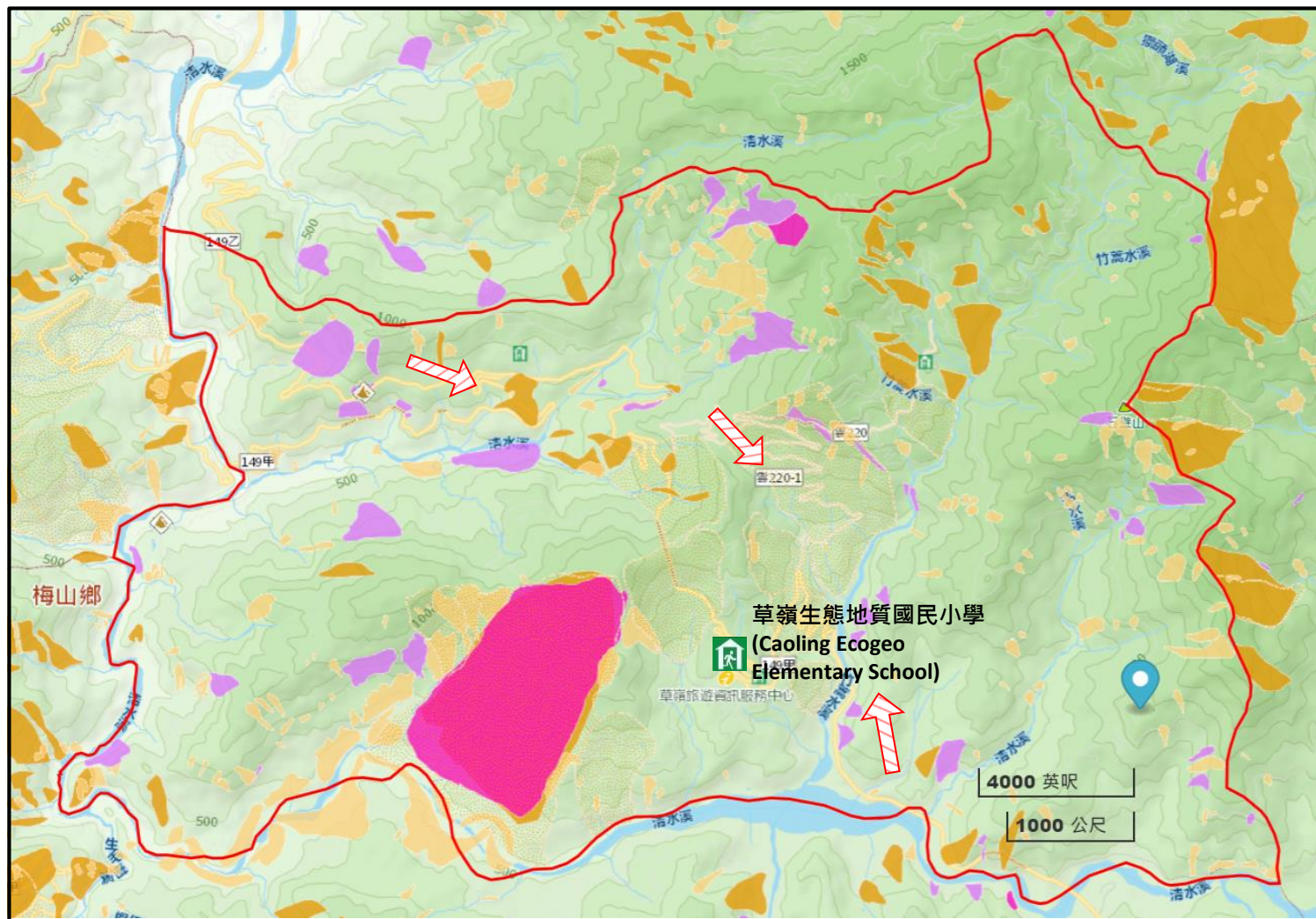
Evacuation Shelter

Shelter1: Caoling Ecogeo
Elementary School

Accomodate: 100 people

Address: No. 56-8, Caoling,
Gukeng Township

TEL: 05 583-1010



Legend

Administrative Boundary

Village Boundary

Labelling

Evacuation Route

Shelter for Earthquake

Facility

Indoor Evacuation Shelter

Debris Disaster Potential

Landslide Potential zone

Dip Slope

Falling Rock

Rock Slide

Detritus Slide

Disaster Prevention Information

Administration Zone



Population : 2,519 people

Emergency notification

Gukeng Township Emergency Operation Center, (EOC)
 TEL: 05-582-8919
 Chief of Village QIU-SEN HAN(韓秋森)
 TEL: 05-582-2235
 Gukeng Police Office
 TEL:05-582-1324
 Gukeng Fire Department
 TEL:05-582-1537

Disaster Prevention Information Website

Soil and Water Conservation Bureau
<http://246.swcb.gov.tw/>
 Water Resources Agency
<http://www.wra.gov.tw/>
 Directorate General of Highways
<http://www.thb.gov.tw/>

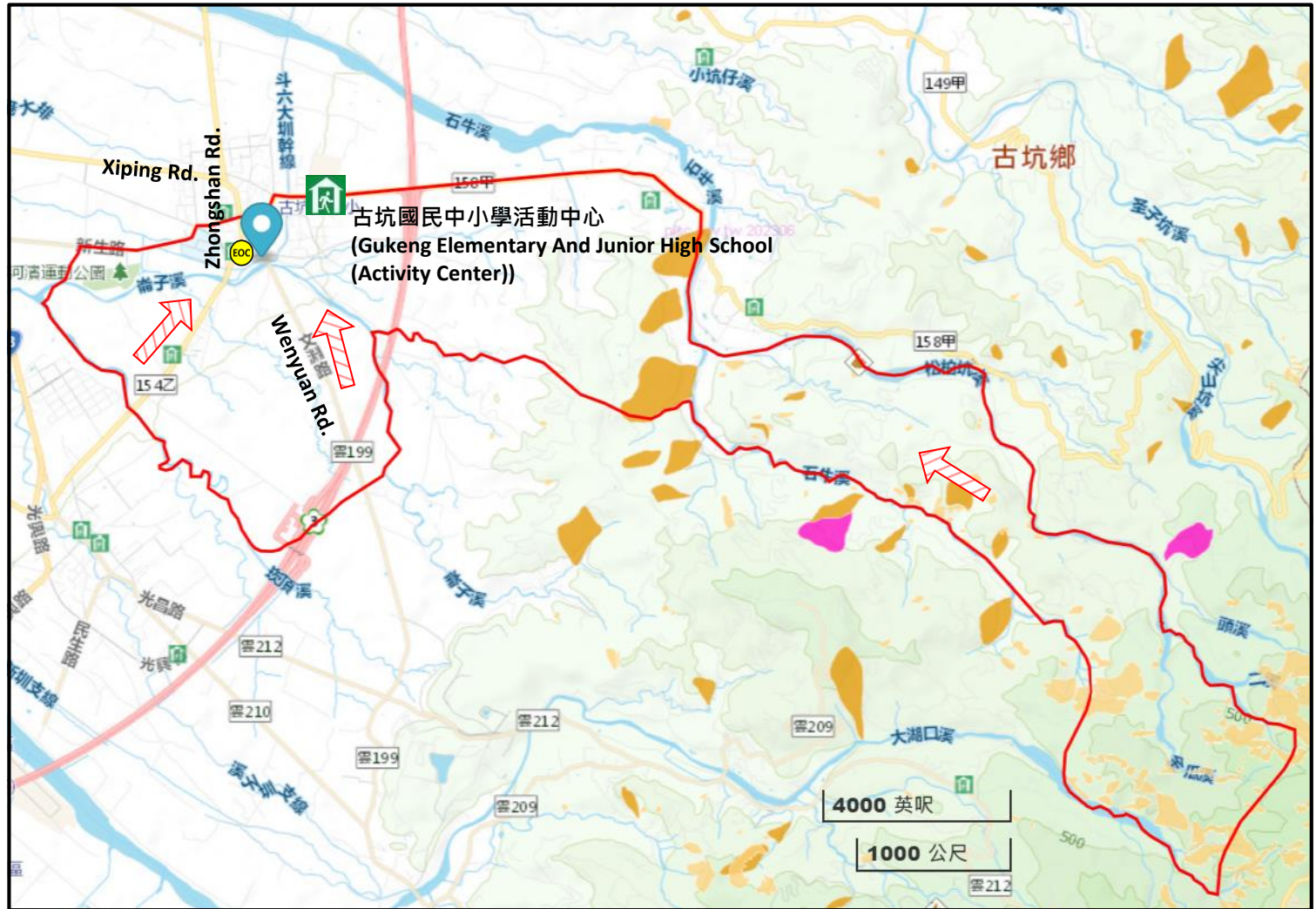
Evacuation Principle

Debris: Take refuge at evacuation shelter.

Evacuation Shelter

Shelter1: Gukeng Elementary School (Activity Center) 坡
 Accommodate: 200 people
 Address: No. 3, Chaoyang Rd., Gukeng Township
 TEL: 05-582-1024
 Shelter2: Gukeng Junior High School(Activity Center) 坡
 Accommodate: 200 people
 Address: No. 2, Chaoyang Rd., Gukeng Township
 TEL: 05-582-1004

Made by Gukeng Township Office, March 2024



Legend	Administrative Boundary	Labelling	Facility	Debris Disaster Potential
	Village Boundary	Evacuation Route	Indoor Evacuation Shelter	Landslide Potential zone
		Shelter for Earthquake	Emergency Operation Center, EOC	Dip Slope
				Falling Rock
				Rock Slide
				Detritus Slide
				Historical Debris Disaster

Disaster Prevention Information

Administration Zone



Population : 2,312 people

Emergency notification

Gukeng Township Emergency Operation Center,(EOC)
TEL: 05-582-8919

Chief of Village BAO-XIAN QIU(邱實賢)

TEL:05-582-1384

Gukeng Police Office

TEL:05-582-1324

Gukeng Fire Department

TEL:05-582-1537

Disaster Prevention Information Website

Soil and Water Conservation Bureau

<http://246.swcb.gov.tw/>

Water Resources Agency

<http://www.wra.gov.tw/>

Directorate General of Highways

<http://www.thb.gov.tw/>

Evacuation Principle

Debris: Take refuge at evacuation shelter.

Evacuation Shelter

Shelter1: Gukeng Elementary School (Activity Center) 坡

Accommodate: 200 people

Address: No. 3, Chaoyang Rd., Gukeng Township

TEL: 05-582-1024

Shelter2: Gukeng Junior High School(Activity Center) 坡

Accommodate: 200 people

Address: No. 2, Chaoyang Rd., Gukeng Township

TEL: 05-582-1004

Made by Gukeng Township Office, March 2024



Legend	Administrative Boundary	Labelling	Facility	Debris Disaster Potential
	Village Boundary	Evacuation Route	Indoor Evacuation Shelter	Landslide Potential zone
		Shelter for Earthquake	Emergency Operation Center, EOC	Dip Slope
				Falling Rock
				Rock Slide
				Detritus Slide
				Historical Debris Disaster