



雲林登場
It's Our Time

A SHORT INTRODUCTION
TO YUNLIN

Yunlin
Time for Yunlin to Shine
Marvelous and Exciting



Time for Yunlin to Shine Marvelous and Exciting

Contents



- 02** Message from the Magistrate / New Yunlin Brings New Happiness
- 04** A diagram of characteristics on the 20 districts in Yunlin County
- 05** Yunlin At a Glance
- 06** **Transportation infrastructure /**
Convenient network of road infrastructure
Reach Yunlin from various directions and place
- 12** **Fertile industry /**
Prosperous Yunlin
The lands with bountiful and diverse agricultural products
- 18** **Prosperous economy /**
Industrial foundation
Facilitate local economy
- 24** **Water conservation and environmental protection /**
Protect the environment
Create a sustainable new life
- 30** **Education and learning /**
Education takes root
Create a better future for children
- 36** **Social medical care /**
Love and care
Provide the most attentive care
- 42** **Cultural tourism /**
Leisure strolls in Yunlin
Experience local customs

New Yunlin Brings New Happiness



Yunlin is situated in the northernmost part of the Jianan Plain, which is in the central-southern region of western Taiwan. Yunlin covers an area of 130,000 hectares, of which 80,000 hectares is agricultural land. It has an abundance of agricultural products as it has a mild climate and receives a great deal of sunlight all year round; Yunlin is deemed as the most important agriculture county in Taiwan as one-third of domestically planted vegetables come from Yunlin.

In addition to the fertile land, Yunlin has different various local characteristics and development, including mountains, coasts, plains, historic sites, and human characteristics. However, it is inevitable for Yunlin to transform due to the encountered population and economic issue. Therefore, I counted all resources and gradually planned various development strategies of the county government after I took office. Our ultimate goal is that Yunlin County will be able to achieve the five major goals of "finding a career for young people, finding support for the elderly, finding opportunities for enterprises, finding dignity for the underprivileged, and finding a way out for Yunlin" with the eight major policies based on "economy, industry, urban and rural areas, education, women and children, medical care, long-term care, and tourism and culture."

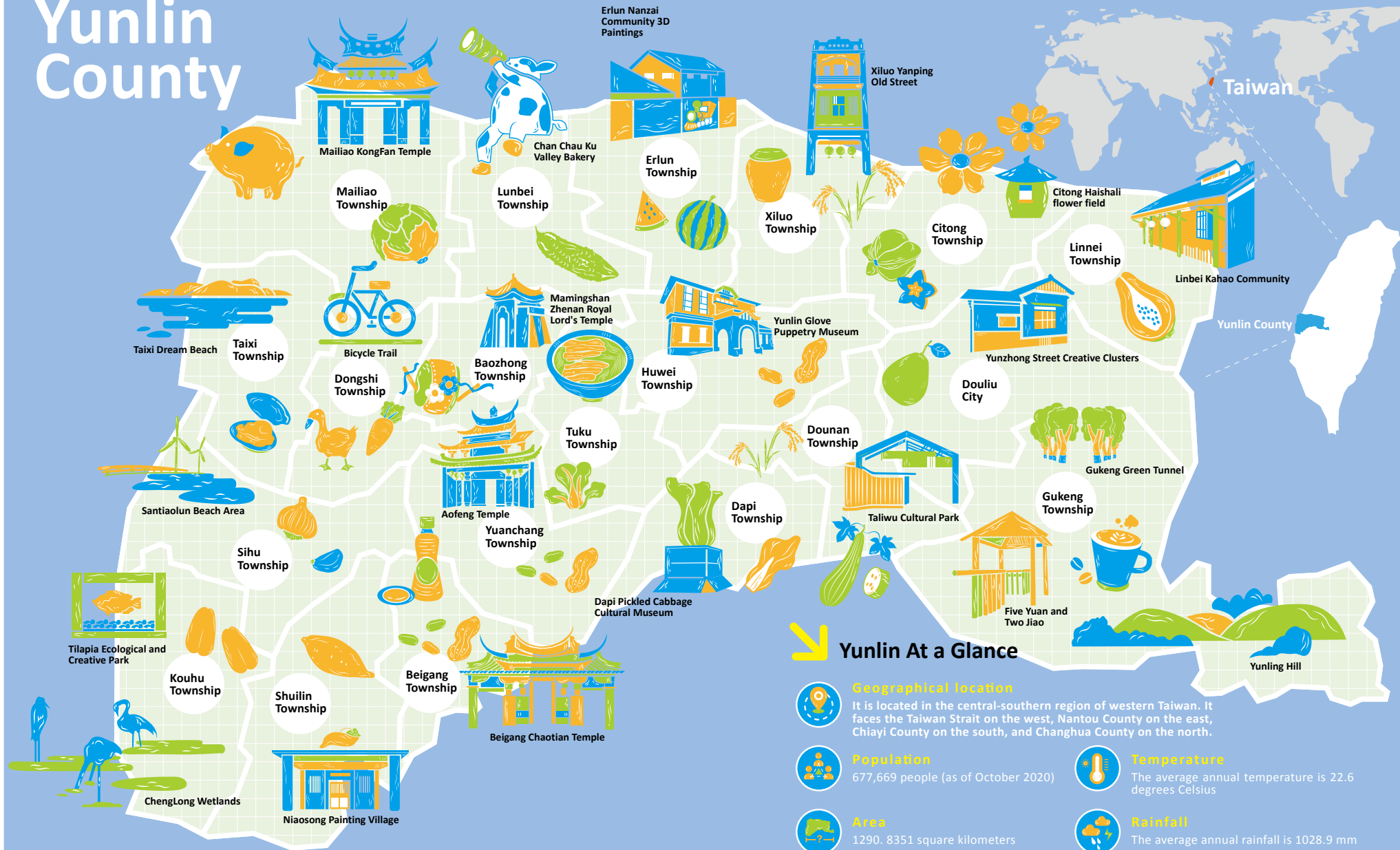
With the effort we have put into the new Yunlin, the possibility of bringing more and more happiness is getting higher and higher. In this respect, the county administration team and I sincerely invite domestic and overseas friends to visit Yunlin to experience the beautiful Yunlin for its natural, simple, and convenient living environment.

The Magistrate of Yunlin County

Chang Li Shan



Yunlin County



Yunlin At a Glance



Geographical location

It is located in the central-southern region of western Taiwan. It faces the Taiwan Strait on the west, Nantou County on the east, Chiayi County on the south, and Changhua County on the north.



Population

677,669 people (as of October 2020)



Temperature

The average annual temperature is 22.6 degrees Celsius



Area

1290.8351 square kilometers



Rainfall

The average annual rainfall is 1028.9 mm



Climate

Subtropical



Administrative district

The county is divided into 20 administrative districts, including Douliu City, Gukeng Township, and Linnei Township that are nearby the mountains, and the remaining 17 townships are located in the plains area.



Transportation infrastructure



Way of transportation
Decide the exploration perspective
Avenues and alleys
Fast and leisure
A great way to deeply discover Yunlin





Convenient network of road infrastructure Reach Yunlin from various directions and places



Transportation status Comprehensive network of road infrastructure

National Highway No. 1 and National Highway No. 3 pass through the northern and southern regions of Yunlin. There are multiple national highway interchanges and service areas in the county, which can fulfill the needs of tourism, business, and daily life.

Provincial Highway No. 61 (also known as West Coast Expressway) facilitates the development in the coastal area; Provincial Highway No. 78 is the longest east-west expressway in Taiwan, connecting National Highway No. 1, No. 3 and Provincial Highway No. 61; Provincial Highway No. 1, No. 3, No. 17, and No. 19 are connected to access the internal road network in the county.

Public transportation Provide diverse ways of transportation



The Taiwan High Speed Rail created the one-day living circle and constructed the Yunlin Huwei Station for the high-speed railway. The access road system in the high-speed railway station area has been continuously improved. The "First Phase of the Improvement Project for the North Side Road in the Station Area" was awarded the "Excellent Public Construction for Occupational Safety, Safety and Health in 2019 - Golden Safety Award" and "The 19th Public Construction Golden Quality Award - Excellent Work."

bottlenecks such as railroad crossing, pedestrian bridge, and underpass to balance the development on both sides of the railway.

In addition, five railway stations of Taiwan Railways were established in the county, including Linnei, Shiliu, Douliu, Dounan, and Shigui. Douliu City continues to promote the plan for an elevated railway to eliminate transportation

In the aspect of public transportation, the six bus routes in the urban area include the Douliu regional loop road network, which has enhanced the convenience of accessing the high-speed railway Yunlin Station from various places. The "demand for service bus" has been set up, and the "rural happiness bus" has also been set up for the first time in order to fulfill the needs of schooling and medical care for local residents. In addition, the two routes of "Taiwan Tourist Shuttle" between the main sightseeing spots- Beigang Huwei and Douliu Gukeng, will take the tourists to deeply discover Yunlin.



Go through county highway 149A and 149B Reconstruct the glory of Caoling



County highway 149A is an important route from Douliu Gukeng to Caoling. It had been interrupted for 20 years since the 921 earthquake and local residents and tourists are looking forward to its reopening for operation.

During the interruption period of county highway 149A, county highway 149B had become an important alternative route. Yunlin county government cooperated with the Nantou County government to improve the road quality of county highway 149B. The road has opened for big tourist buses. This collaboration project has not only greatly improved the transportation environment and increased the number of tourists in Caoling, but has also become a model for cross-county cooperation. Furthermore, the county government actively repairs the interrupted sections of the road and cooperates with the disaster repair construction project. The entire line is expected to be opened for operation in 2021 and the bridge for crossing Qingshui River will be completed to reconstruct the glory of Caoling.



Yunlin Living Circle Comprehensive construction of road system

The constructions such as repair of the previous road, road widening, improvement of dangerous road sections, and new bridges for Yunlin living circle are expected to be completed, which cover many main roads with the implementation of comprehensive planning, to assist the construction of a comprehensive local network of road, improve transportation bottleneck, and enhance transportation capacity.





Fertile industry

.....

One-third of domestically planted vegetables comes from Yunlin
Fruitful results for five consecutive years
Ranked number one in counties and cities with the highest agricultural output value in the nation

Yunlin



Prosperous Yunlin The lands with bountiful and diverse agricultural products

Agricultural output value Top in Taiwan

The "mountainside" of Yunlin is the area of fruit production such as oranges, tangerines, pomelos, and pineapples. The "plain area" is the production area of vegetables, rice, and grain respectively from the northern to southern region. The planting area of rice, groundnut, garlic, and sugarcane are ranked top in the country.

Yunlin is a great agricultural county and the number of the farming population accounts for nearly half of the total population in the county. In addition to continuing to incubate agricultural talents, Yunlin also promotes intelligent agricultural university, organic and facility special classes, and agricultural farming and improvement groups.



Fine Products of Yunlin Served as international cuisine

Aiming at the international market, we actively create a product brand "Fine Products of Yunlin" for agricultural products. Excellent local business operators with high-quality products are included in the project through evaluation activities and certification mechanism, to be the best endorsement for Yunlin.

The Fine Products of Yunlin cooperates with domestic department stores, supermarkets,

and e-commerce channels, such as: PX Mart, Funcom Supermarket, Breeze Supermarket, Taichung Shin Kong Mitsukoshi Department Store, etc. We also aggressively expand export sales channels in foreign countries and successfully export our products to mainland China, Canada, Singapore, Brunei, and Malaysia, so that our fine products can be served on tables globally.





E-processing of agricultural affairs Meet the latest trends

The agriculture industry is also integrated with new technologies and e-commerce platforms such as the "Information Platform of Agricultural Products," to offer online inquiry services, including daily transaction prices on the market, place of origin and production output, import information, etc. so that we can easily understand the current agricultural status in Yunlin.

The "e-processing of agricultural affairs" is based on the concept of a mobile farm by using a unique design of cultivation calendar for management and tracking of field operations, and the results will be uploaded to the "production and sales traceability system of agricultural products" for traceability and information transparency.



Agricultural tourism Enjoy the local style

At present, the tourism style with agricultural characteristics is very popular. We had conducted the Taiwan Coffee Festival in the mountain area of Yunlin for many consecutive years. The Huashan recreational agriculture area in Gukeng is famous for its landscapes and sky ladder trail. The Jinhua recreational agriculture area is located in the coastal area with rich ecological resources, where you can join unique activities such as catching clams, shucking oysters, and learning about animals and plants in the wetlands.



Fishery and livestock products Display the local characteristics of Yunlin

The aquaculture farms are located in four townships along the sea line, including Mailiao, Taixi, Sihua, and Kouhu Township. The common fishery species are tilapia, clams, oysters, eels, and mullet, which have nurtured many generations of local fishermen.

Yunlin is also an important county for livestock and poultry production. The amount of livestock and poultry in pigs, chickens, ducks, and geese are the highest in the nation, with a total output value of 30 billion. Yunlin also has the most livestock and poultry slaughterhouses and processing plants in the country and Yunlin has the most diverse products. At the same time, consumers can be at ease to enjoy the taste of Yunlin with the reassurance of product inspection, production and sales traceability, CAS certification.





A Vision Map

Prosperous economy

.....

With an open and positive attitude
Economic upgrade in progress
Open our arms
Welcome descendants of Yunlin
Return home to start a business and
realize your dream



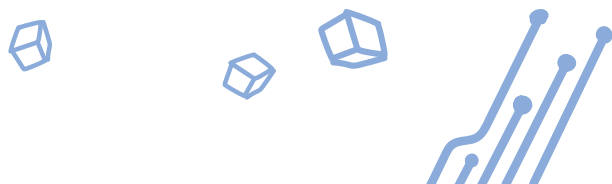


Industrial foundation Facilitate local economy

The development in the early days Facilitate industrial development with the agriculture industry

Yunlin county is founded based on the agriculture industry and the industrial industry is also vigorously promoted in the county. For example: the "Fengtian Industrial Park" and "Yuanchang Industrial Park" in the early days mainly produced plastic, food, and metal products. Through the development of the light industrial industry to expand the construction of rural infrastructure, so that agriculture and industrial industry can complement each other.

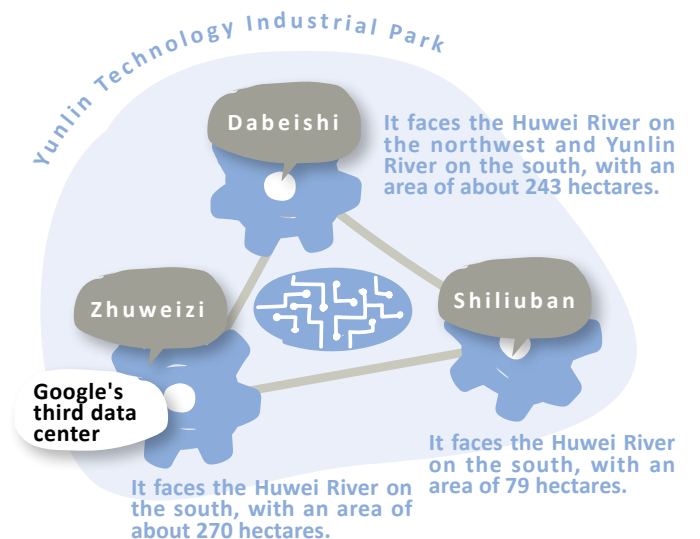
The "Douliu Industrial Park" attracts enterprises to invest and establish factories due to its outstanding investment environment. Its total development area is 203 hectares and it has become a comprehensive industrial park based on food, metal, textile, and plastic products. Another characteristic of the industrial park is that it has many tourism factories, which are the highlights of tourism in the county.



Technology industry Inject new energy

Three locations are included in the "Yunlin Technology Industrial Park" such as "Dabeishi," "Zhuweizi," and "Shiliuban." At present, the "Dabeishi" area is based on the manufacturing of glass substrates, sports products, medical care, and metal casting industry, with a total of 67 manufacturers and an annual output value of 107.6 billion NT dollars. Google also purchased about 20 hectares of land in the "Zhuweizi" industrial park for the establishment of the third data center in Taiwan.

In addition, the Huwei industrial park of the Central Taiwan Science Park has introduced the optoelectronics and biotechnology industries, covering a total area of 97 hectares. It has become the key interconnection point between the two parks as it is located in the center area of the Tainan and Taichung Science Parks and it is also nearby the National Highway No. 1, Provincial Highway No. 1, Provincial Highway No.78-the east-west expressway.





Three major areas in the park Reach the peak of the industrial industry

In the future, Yunlin will continue to plan and develop three major parks including "Gukeng value-added park," "Baozhong agricultural machinery and technology park," and "Taixi industry park." The "Gukeng value-added park" is nearby the urban area of Gukeng. It has an area of about 71.35 hectares and it is expected to create more than 3,000 job opportunities.

A schematic diagram of the Gukeng value-added park



Youth entrepreneurship Bring back the talents



The county government specially entrusted the National Yunlin University of Science and Technology to conduct five youth entrepreneurship courses in order to help the descendants of Yunlin to take root and realize their entrepreneurial dreams. These courses include writing entrepreneurial proposals, preparation for entrepreneurship, financial management, marketing strategy, and human resource management, to help cultivate the concepts and capabilities of entrepreneurship to enhance the success rate of entrepreneurship.

Moreover, the local SBIR program is organized every year. The Small Business Innovation Research Program (SBIR) subsidizes small and medium-sized enterprises to conduct innovative research and development. At the same time, the innovative entrepreneurs and youth entrepreneurs are included as key consultation targets to encourage youth entrepreneurs to join the innovative research and development.



Water conservation and environmental protection



Life vision
Beautiful mountains, freshwater, and air
Happiness is not created in one day
From every
Minute act of care and change





Protect the environment Create a sustainable new life

Air pollution control and prevention A breath of fresh air

Yunlin had invited experts and scholars to draft an air pollution prevention and control plan. The air quality is expected to get better and better through controlling constant pollution sources, removing the pollution sources, and dissipation of pollution sources. Furthermore, the dusty condition in Zhuoshui River is significantly improved by laying clamshells and gravel and planting the vegetation and ground cover plant species. A temporary storage site was set up in Wengang Village, Taixi Township for waste disposal of shells such as hard clam shells and oyster shells, which help reuse of resources as well as prevent dust and sand.

At the same time, the mini air quality sensors are installed in the industrial park, traffic sensitive areas, large schools, and district offices of townships and cities. These sensors can upload relevant data to the platform of the Environmental Protection Administration so that the general public can check the real-time air condition via their mobile apps and computers.

Wetland conservation The ecology is as amazing as sightseeing

The ChengLong Wetlands, one of the most important wetlands in the country, is where migratory birds inhabit every year. The precious animal and plant species in the wetlands include black-faced spoonbill, peregrine falcon, and Yilan cyperaceae. The "ChengLong Wetlands International Environment Art Festival" is held in April-May every year. The domestic and foreign artists are invited to create their artworks in the art festival to promote environmental protection concepts with aesthetic beauty.

The Yiwu Wetlands is also located in Kouhu Township and it has diverse habitat types such as estuary wetland, coastal wetland, fish farm, and artificial detention pond, which attract a variety of birds to inhabit and it has become a paradise for bird watching.





Flood control Create a safe homeland

Yunlin has suffered from flooding over the years as it is situated in a flat and low-lying land area. Its primary goal is to create a safe environment for flood control.

The construction projects for a high-quality water environment include flood control measures such as the reconstruction of bank protection, a new pumping station for the water gate, and a flood detention pond. The dredging and maintenance projects of rainwater and sewage drain, and river and regional drainage and maintenance work are conducted regularly. Moreover, the river dredging operations are completed prior to the flood season and the reconstruction project will be actively after a disaster.



Pack the waste Reduce pollution to keep the environment clean

Yunlin has been actively promoting waste classification, resource recycling, and waste reduction, and its waste recycling rate is increasing year by year. The waste is packed and compressed to reduce its volume, so as to be more convenient for transportation and stacking, prevent scattering and smell of garbage, and gain more time and space for long-term planning in the future. Establish a recycling and reuse demonstration facility of zero-waste recycling system (ZWS) to reach the daily processing capacity and convert it into Refuse Derived Fuel (RDF) for waste recycling and reuse.



Kitchen waste for compost Sustainable development of animal husbandry

Yunlin is the first in the nation to ban the use of kitchen waste for feeding pigs. Yunlin promotes fully using kitchen waste for compost to prevent the invasion of African swine fever, protect the animal husbandry for sustainable development, and achieve the goal of resource recycling and reuse. In addition, with the efforts of pig farmers and the government, Taiwan has successfully and officially eliminated the foot-and-mouth disease and hence Yunlin's high-quality pork can be exported internationally once again.



The concept of not wasting food and sorting and reuse of kitchen waste is also very important. The raw kitchen waste is treated for composting and the cooked kitchen waste is processed with rendering treatment. The compost and rendering products are mixed as organic fertilizer, which is offered to the use of communities, institutions, and schools, street trees, and the general public in the county for free.



Education and learning

.....

The children in Yunlin
Smile every day
The future
Is not as far as it seems
Going forward side by side is true happiness





Education takes root Create a better future for children

Optimization of school grounds Happily learn together

Education is a long-term plan. All of the hardware and software investments are for our children's future. As the climate is getting increasingly hotter, Yunlin County is the first in the country to install air conditioning in all school classes, so that our children can study in a comfortable environment and improve their learning efficiency.

For school ground security, we conducted the assessment, reinforcement, demolition, reconstruction, and renovation of campus facility projects for the old and dangerous school buildings of public elementary and junior high schools, including waterproof and heat insulation of school buildings, toilet reconstruction, installation of a new ventilation system, schools' sports facilities and renovation of buildings, etc. We comprehensively optimize every corner of the school grounds to safeguard our children.

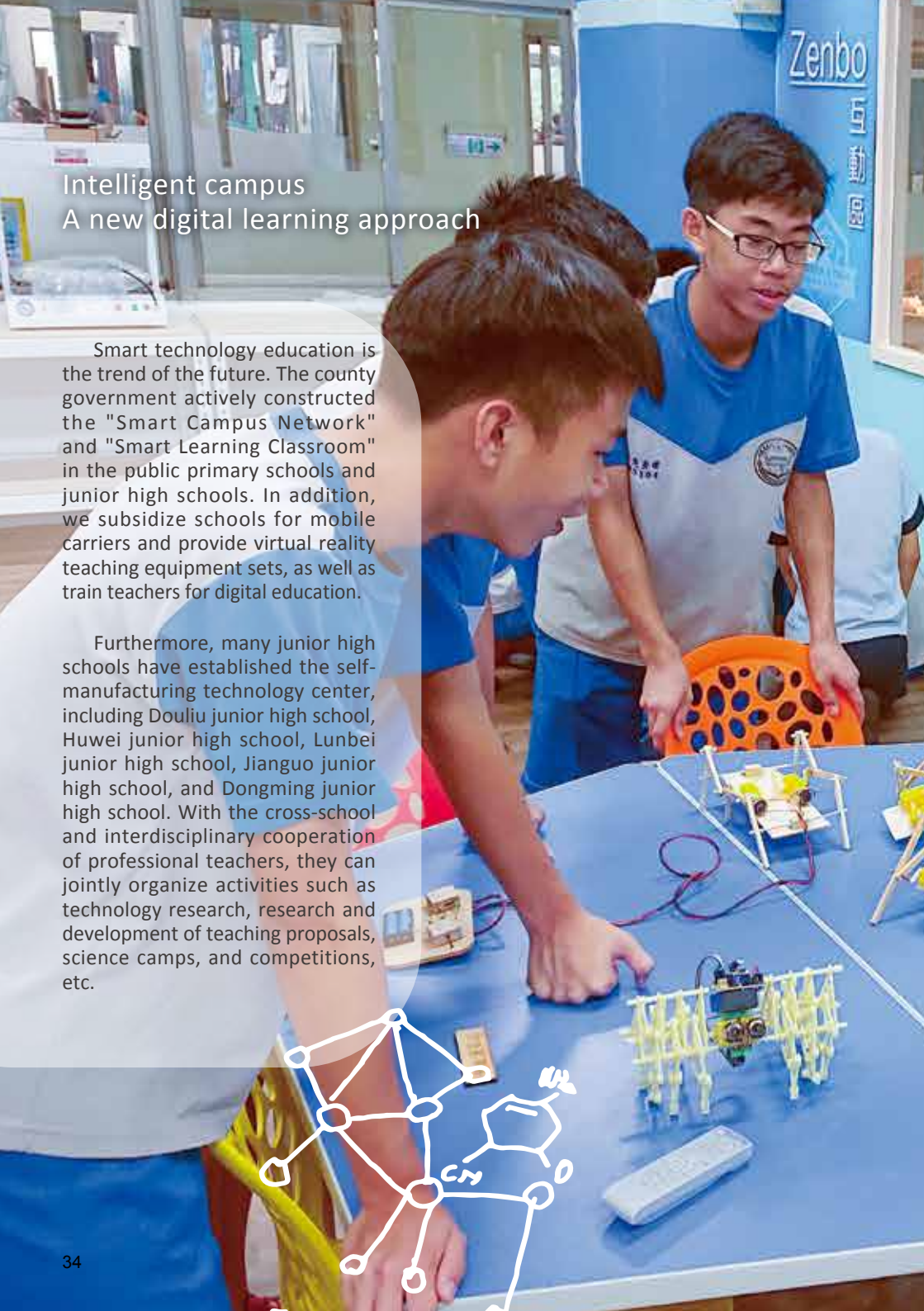


English education In preparation for an international horizon

English is an international tool for communication and it is a bridge to the world. The aggressive Yunlin children should have an international horizon.

The county government actively subsidizes schools to purchase English textbooks and teaching materials as support for English education. We also increase the number of foreign English teachers to promote the bilingual preceding courses, plan diverse English learning content, and create a high-quality English learning environment. At the same time, we conduct the trial bilingual education by establishing bilingual schools in some elementary and junior high schools; these courses are mainly based on English teaching and supplemented by Chinese teaching so that English education can take root starting from a young age.

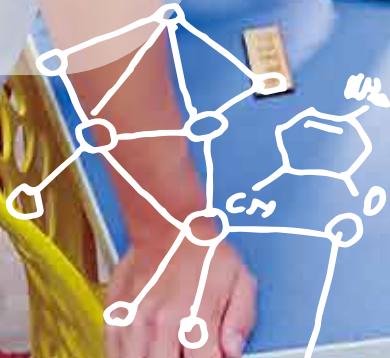




Intelligent campus A new digital learning approach

Smart technology education is the trend of the future. The county government actively constructed the "Smart Campus Network" and "Smart Learning Classroom" in the public primary schools and junior high schools. In addition, we subsidize schools for mobile carriers and provide virtual reality teaching equipment sets, as well as train teachers for digital education.

Furthermore, many junior high schools have established the self-manufacturing technology center, including Douliu junior high school, Huwei junior high school, Lunbei junior high school, Jianguo junior high school, and Dongming junior high school. With the cross-school and interdisciplinary cooperation of professional teachers, they can jointly organize activities such as technology research, research and development of teaching proposals, science camps, and competitions, etc.



Take care of schoolchildren Guarding them with comprehensive love

For children care, we encourage private kindergartens to join preceding public kindergartens and establish more non-profit kindergartens. We continue to establish elementary school affiliated kindergartens with the goal of "at least one elementary school affiliated kindergarten in each of the townships"; in addition, we provide a monthly childcare allowance for children who go to general private kindergartens and those who are in homeschool, to reduce the burden of childcare.

We provide comprehensive subsidies for lunch during winter and summer vacations in order to take care of the diet and nutrition of economically underprivileged children. They can use the meal coupons at the "happy meal station" in any of the four main franchised convenience stores nearby, to care for the underprivileged children and warm up their stomach and heart.



Sportsmanship ethics Cultivate strength for both physical and sedentary activities

The first national sports center in Yunlin integrates the leisure and sports functions to provide comprehensive facilities and diverse venues, so that the citizens can enjoy the fun of sports activities regardless of their age.

It has both physical and sedentary activities which is a wonderful sports center. 2020 is defined as the year of educational ethics in Yunlin. The "Civility, Justice, Integrity and Humility" plaque has been rehanged at public primary schools and junior high schools in the county. The editing of educational ethics in textbooks has been completed and we look forward to educating our children with proper concepts to enhance the school ethics.





Social medical care

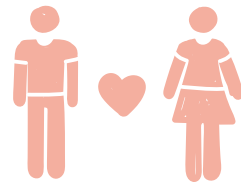
.....

With a soft heart
Love and care
Extending a helping hand
Overcome difficulties together
Through the hard times





Love and care Provide the most attentive care

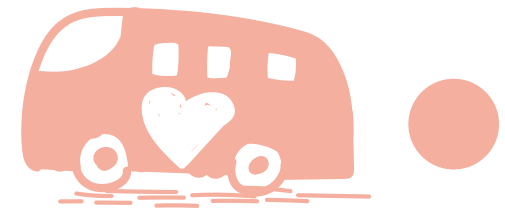


Family happiness Start with gender equality and domestic violence prevention

In a pluralistic society, gender equality is the primary issue. The Gender Equality Committee continues to improve the six tools, including gender statistics, gender budgeting, gender impact assessment, gender analysis, and gender identification and training for gender equality. The promotion activities take place in grassroots, schools, and communities, and the new immigrants are also assisted to blend in local life at the same time.



To promote the protection of children and adolescents, prevention of domestic violence and prevention of sexual assault, we have achieved the goal of "one guard station in each of the villages," so that the communities can independently reinforce the services such as prevention and control, community care, emergency notification, and short-term shelter service, to establish family care and security network.



Take care of the underprivileged Spreading love to every corner

To help the physically and mentally disabled and the elderly so that they can conveniently receive medical treatment and rehabilitation, the Yunlin Rehabilitation Bus for the physically and mentally disabled not only provides free services but also creates an online reservation system for convenient access at substations such as Douliu, Huwei, Beigang, Sihu, and Xiluo.



The first "supermarket type" physical food bank was established in Dounan for providing food and supplies to underprivileged families and groups. The establishment of a "physical food bank" in each of the districts can provide comprehensive service to society.



Social welfare subsidies Safeguard the lives of 10,000 people

The social welfare subsidies include the living subsidies for low-families, living subsidies for the physically and mentally disabled, living allowance for children and adolescents, and living subsidies for the middle-income and low-income elderly. The social welfare subsidies have helped several hundreds of thousands of people. At the same time, the first "caring subsidies for the relatives of disabled elderly" in the nation are also organized.

In addition, the microinsurance service is provided. The "microinsurance for low-income families, and middle-income and low-income families" can help the residents in the county who are aged 15 to 70 and meet the requirements. Moreover, the "microinsurance for families in special circumstances" is available for families who require financial help.



Care service upgrade Free vaccinations and glasses for the elderly

We provide the 9-valent HPV vaccine (Human Papillomavirus) for seventh-grade female students to protect the health of girls in Yunlin. We are one of the first counties and cities in Taiwan to promote the protection service and upgrading of the HPV vaccine. In addition, we provide the pneumococcal vaccine for the elderly who are over 65 years old.

For the elderly who are over 65 years old, we provide them with the once-in-a-lifetime offer of a free pair of reading glasses. As of now, 20,000 pairs of reading glasses are provided to the elderly in the county.



Long-term care 2.0 Sparing no effort to take care of the elderly

In response to the trend of an aging population, the Health Department has established a dedicated long-term care division for the 17 business operations of long-term care 2.0. As of October 2020, the community comprehensive care service systems have been established, including 24 locations in site A, 262 locations in site B, and 149 locations in site C (112 locations for social affairs and 37 locations for medical services), which have served one million person counts.

In addition, the senior citizens' eatery that combines the service of daycare for the elderly and nutritious meals, not only provides nutritious and delicious meals but also provides the elderly with the opportunity to go out for learning and interaction. There are currently more than 100 service locations with the highest dining frequency in the country.





Cultural tourism



- Memorable travel
- Beautiful scenery and cultural discovery
- Experience local culture and customs
- Landscapes of mountains, ocean, and plains
- These hidden highlights are worth a visit





Leisure strolls in Yunlin Experience local customs

Mountain, sea, and plains A demonstration of various landscapes

The various landscapes of mountains, ocean, and plains in Yunlin are unique and marvelous. The Gukeng Huashan and Caoling scenic area are especially famous in the mountainous area. Visitors can enjoy coffee and night view in Gukeng Huashan area as well as natural wonders such as Wannian Canyon and Penglai Waterfall in Caoling. In recent years, new sightseeing spots such as Yunling Hill and Five Yuan and Two Jiao are very popular.

Visitors can enjoy the ocean scenery in the coastal area such as the Taixi dream beach. The Sea Garden Conch Roundabout has become a FB check-in place and Kouhu Township has the ChengLong Wetlands and Yiwu detention pond. The development in the plain area is based on the characteristics of each township, including the Xiluo Bridge, Old Street, Iron Bridge in Huwei, and the painting village, which are the attractions for tourists to enjoy their pleasant sightseeing experience in Yunlin.



Gourmet food and shopping Enjoy the taste of local flavors

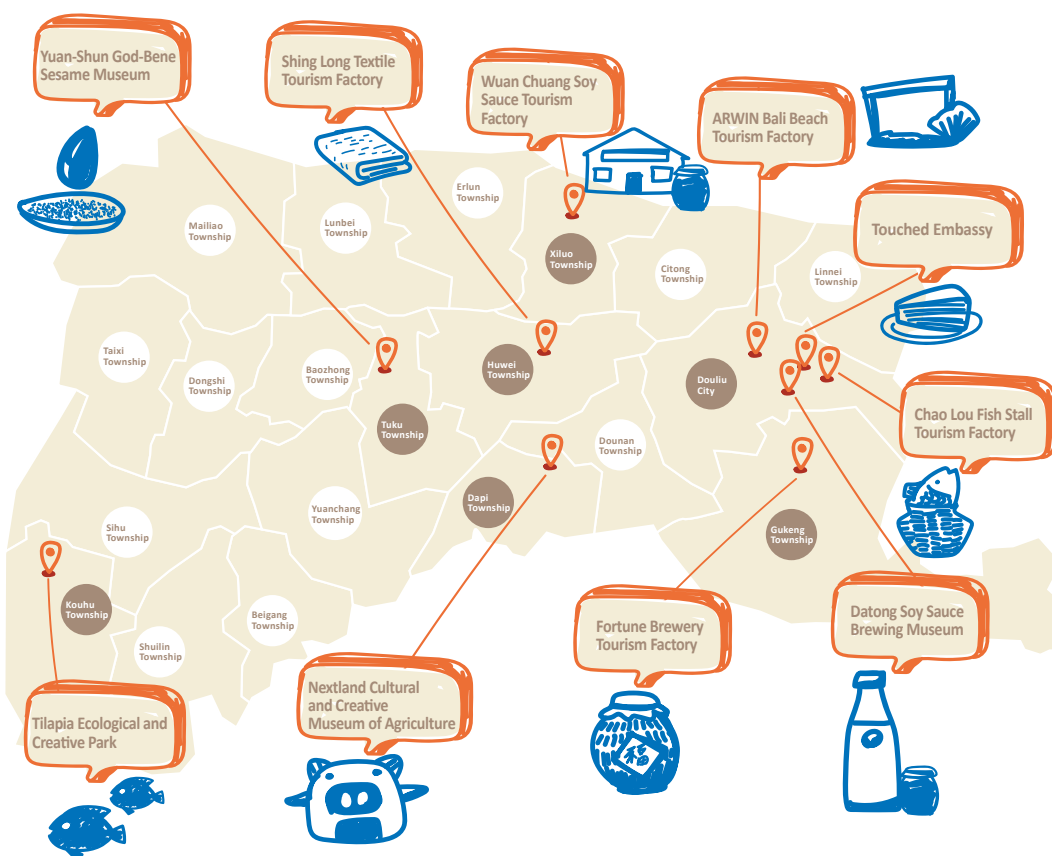
The various gourmet foods and snacks can be found in streets and alleys of Yunlin, such as the squid potage soup in Douliou, the Taiwanese meatballs, beef noodles, steaming rice, mutton soup; in the east market of Xiluo, it has triangle dumplings, savory rice pudding, and mochi; angelica duck thin noodles and rice cakes in Dounan; duck rice, frog soup, noodle paste, fried pan rice cakes in Beigang; potage soup and soy-stewed pork with rice in Huwei.

The unique local flavors of Yunlin are contained in the souvenirs of its agricultural products, including garlic, peanuts, Xiluo rice, soy sauce, coffee, sesame oil, mullet roe and eel, and fruits such as watermelon and cantaloupe.



Tourism factory Educational and fun

There are ten tourism factories in Yunlin County that have passed the Ministry of Economic Affairs' assessment: Wuan Chuang Soy Sauce Tourism Factory, Datong Soy Sauce Brewing Museum, Yuan-Shun God-Bene Sesame Museum, Fortune Brewery Tourism Factory, Chao Lou Fish Stall Tourism Factory, Tilapia Ecological and Creative Park, Nextland Cultural and Creative Museum of Agriculture, Touched Embassy, Shing Long Textile Tourism Factory, and ARWIN Bali Beach Tourism Factory; these tourism factories locally manufacture high-quality products in Yunlin, such as soy sauce, sesame oil, wine, fishery products, meat, desserts, towels, cosmetics, and beauty products.



Cultural heritage Witness the glory of the era

In addition to the hometown of the national traditional art "Glove Puppetry," Yunlin has 114 monuments and historical sites in the county, of which 22 sites have been restored for operations. The Beigang Chaotian Temple was constructed 300 years ago. The annual Beigang Mazu Pilgrimage is an important part of national folk culture and it attracts tens of thousands of people to participate every year.



The diverse cultural halls with local characteristics in Yunlin include: Yunlin Glove Puppetry Museum, Yunlin Story House, the Cultural Center in Xiluo Yanping Old Street, Erlun Story House, and Taixi Haikou Story House, etc.; the new cultural creative attractions developed with the restoration of historic sites include Huwei HoTong Hall and Douliu Yunzhong Street Creative Clusters.

Reading corner Promote happy reading



The "reading corner" project invites stores with local characteristics to set up a reading area in the store. As of now, there are more than 100 locations and nearly 10,000 books are available in circulation. The county is also the first in the nation to cooperate with 7-ELEVEN to establish a 24-hour mini library to promote reading. In addition, we have also obtained the patent rights of domestic trademarks and it is opened for all stores across Taiwan to join.



*A Short Introduction
to Yunlin*

Publisher/ Li-shan Chang

Publishing Unit/ Yunlin County Government

Editorial Board/ Shu-Ling Liao, Chun-Yen Huang, Hsiu-Ju Wang, Kuo-Nan Wu

Address/ No.515, Sec. 2, Yunlin Rd., Douliu City, Yunlin County

Tel./ +886-5-552-2000

We would like to thank the following people for providing us with their photos/

Ko-Hsi Lu, Hung-Sen Wu, Mu-Hsu Hsu, Yu-Lun Hsu, and Chin-Hsi Liao

Printed by/ The Yangtze River Advertising Co.,Ltd. +886-4-2372-7658

Publication Date/ December 2020

ISBN / 978-986-5425-83-8

GPN / 1010902260



*Time for Yunlin to Shine
Marvelous and Exciting*